

Test Report

Report No. ECL01G031852001

Page 1 of 4

Applicant WEIFANG WORLD TECHNOLOGY CO.,LTD

Address 7F,RENHE BUILDING,NO.399 XUANWU STREET,WEIFANG ECONOMIC DEVELOPMENT DISTRICT,SHANDONG PROVINCE,261031,CHINA

The following sample(s) and sample information was/were submitted and identified by/on the behalf of the client

Sample Name DIMETHYL-5-SULFOISOPHTHALATE SODIUM SALT

Sample Received Date Dec. 17, 2014

Testing Period Dec. 17, 2014 to Dec. 20, 2014

Test Requested As specified by client, to test Lead (Pb), Cadmium (Cd), Mercury (Hg), Hexavalent Chromium(Cr(VI)), Polybrominated Biphenyl(PBBs), Polybrominated Diphenyl Ethers(PBDEs) in the submitted sample(s).

Test Method

Test Item(s)	Test Method	Measured Equipment(s)
Lead (Pb)	IEC 62321-5:2013 Ed.1.0	ICP-OES
Cadmium (Cd)	IEC 62321-5:2013 Ed.1.0	ICP-OES
Mercury (Hg)	IEC 62321-4:2013 Ed.1.0	ICP-OES
Hexavalent Chromium(Cr(VI))	IEC 62321:2008 Ed.1 Annex C	UV-Vis
Polybrominated Biphenyl(PBBs)	IEC 62321:2008 Ed.1 Annex A	GC-MS
Polybrominated Diphenyl Ethers(PBDEs)	IEC 62321:2008 Ed.1 Annex A	GC-MS

Test Result(s) Please refer to the following page(s).

Tested by

Yang Huifeng

Reviewed by

Xu Jing

Approved by

Su Hongwei

Date

Dec. 20, 2014



Su Hongwei

Senior Laboratory Manager

No. R108723933

Centre Testing International Co.,Ltd. Shanghai Branch

No.1996,New Jinqiao Road, Pudong District,Shanghai,China

Test Report

Report No. ECL01G031852001

Page 2 of 4

Test Result(s)

Tested Item(s)	Result	MDL
Lead (Pb)	N.D.	2 mg/kg
Cadmium (Cd)	N.D.	2 mg/kg
Mercury (Hg)	N.D.	2 mg/kg
Hexavalent Chromium (Cr(VI))	N.D.	2 mg/kg

Tested Item(s)	Result	MDL
Polybrominated Biphenyl(PBBs)		
Monobromobiphenyl	N.D.	5 mg/kg
Dibromobiphenyl	N.D.	5 mg/kg
Tribromobiphenyl	N.D.	5 mg/kg
Tetrabromobiphenyl	N.D.	5 mg/kg
Pentabromobiphenyl	N.D.	5 mg/kg
Hexabromobiphenyl	N.D.	5 mg/kg
Heptabromobiphenyl	N.D.	5 mg/kg
Octabromobiphenyl	N.D.	5 mg/kg
Nonabromobiphenyl	N.D.	5 mg/kg
Decabromobiphenyl	N.D.	5 mg/kg

Tested Item(s)	Result	MDL
Polybrominated Diphenyl Ethers(PBDEs)		
Monobromodiphenyl ether	N.D.	5 mg/kg
Dibromodiphenyl ether	N.D.	5 mg/kg
Tribromodiphenyl ether	N.D.	5 mg/kg
Tetrabromodiphenyl ether	N.D.	5 mg/kg
Pentabromodiphenyl ether	N.D.	5 mg/kg
Hexabromodiphenyl ether	N.D.	5 mg/kg
Heptabromodiphenyl ether	N.D.	5 mg/kg
Octabromodiphenyl ether	N.D.	5 mg/kg
Nonabromodiphenyl ether	N.D.	5 mg/kg
Decabromodiphenyl ether	N.D.	5 mg/kg

Tested Sample/Part Description White powder

Note: The sample(s) had been dissolved totally tested for Lead, Cadmium, Mercury.

-MDL = Method Detection Limit

-N.D. = Not Detected (<MDL)

-mg/kg = ppm = parts per million

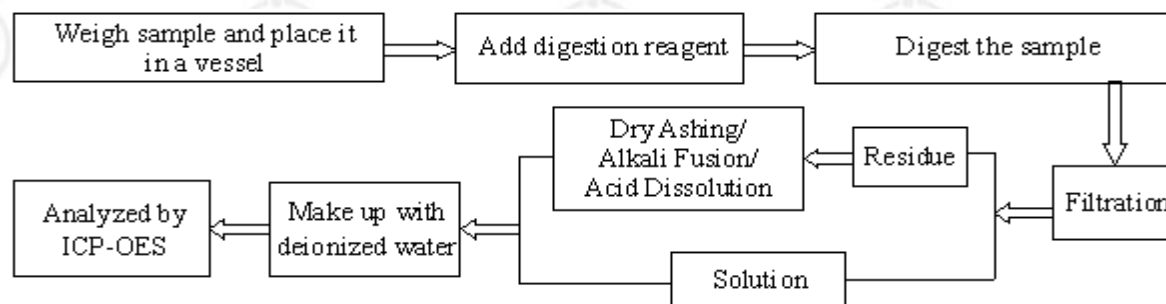
Test Report

Report No. ECL01G031852001

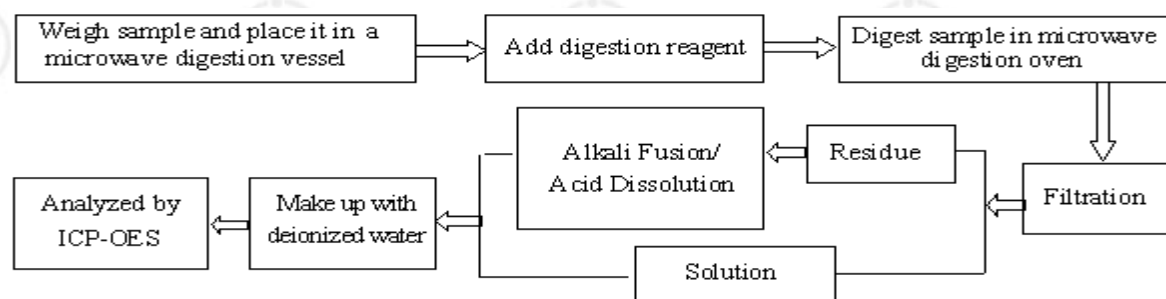
Page 3 of 4

Test Process

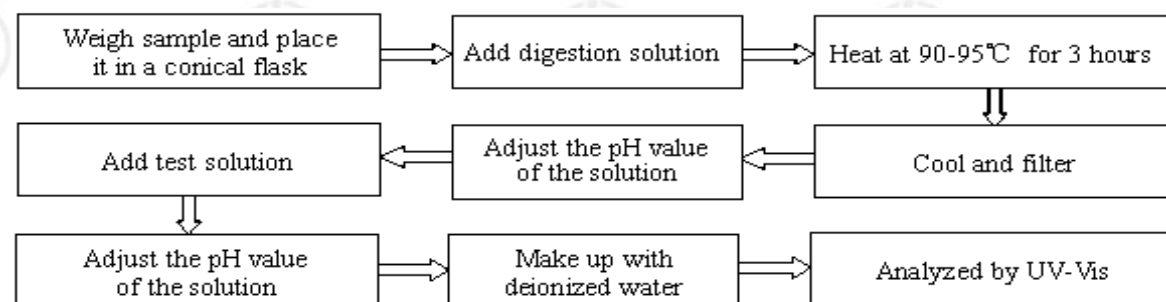
1. Lead (Pb), Cadmium (Cd)



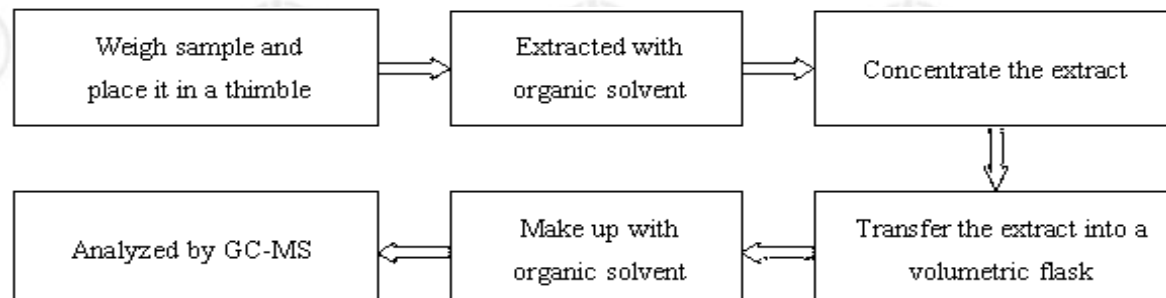
2. Mercury (Hg)



3. Hexavalent Chromium(Cr(VI))



4. Polybrominated Biphenyl(PBBs) , Polybrominated Diphenyl Ethers(PBDEs)

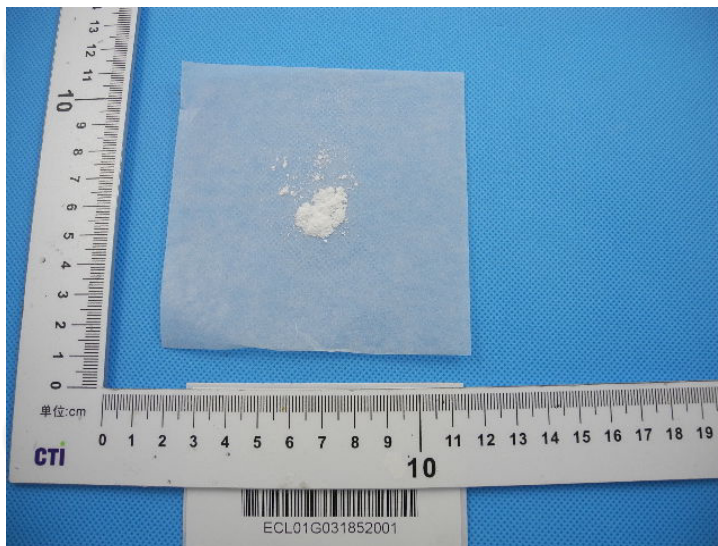


Test Report

Report No. ECL01G031852001

Page 4 of 4

Photo(s) of the sample(s)



*** End of report ***

The test report is effective only with both signature and specialized stamp. The result(s) shown in this report refer only to the sample(s) tested. Without written approval of CTI, this report can't be reproduced except in full.